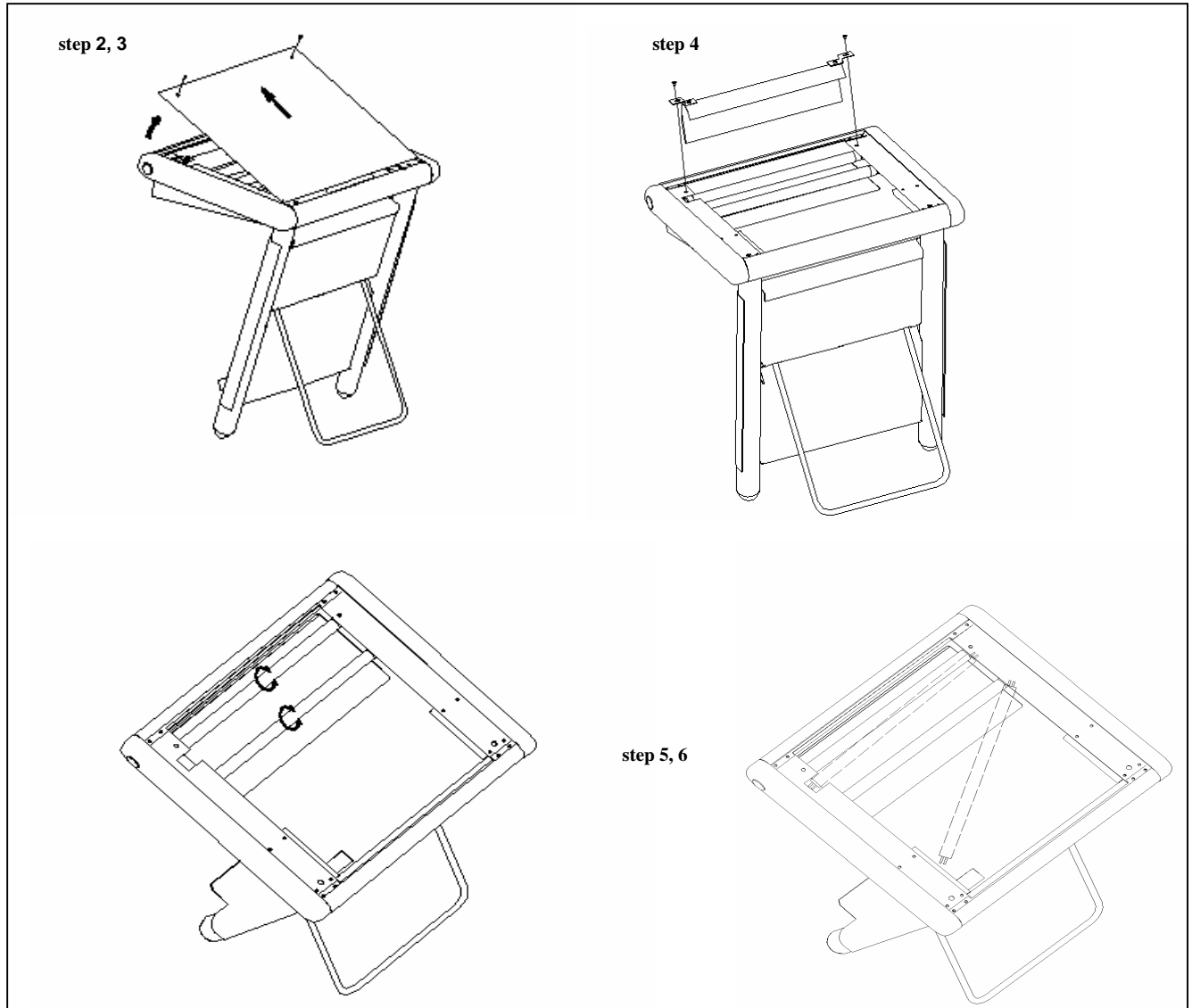


## Image Pro 5000 Tube Replacement



- Step 1** Remove Power Supply !!
- Step 2** Remove 2 screws from top of unit
- Step 3** Lift top plate up to expose bulbs
- Step 4** Locate 2 screws holding down shield that covers light and remove
- Step 5** Turn bulb ¼ turn and remove
- Step 6** Place new bulb in socket and circle ¼ turn to secure
- Step 7** Replace shield, replace top cover and you are ready to use your Image Pro 5000

**Remember to change your bulbs every 2500 hours.**

